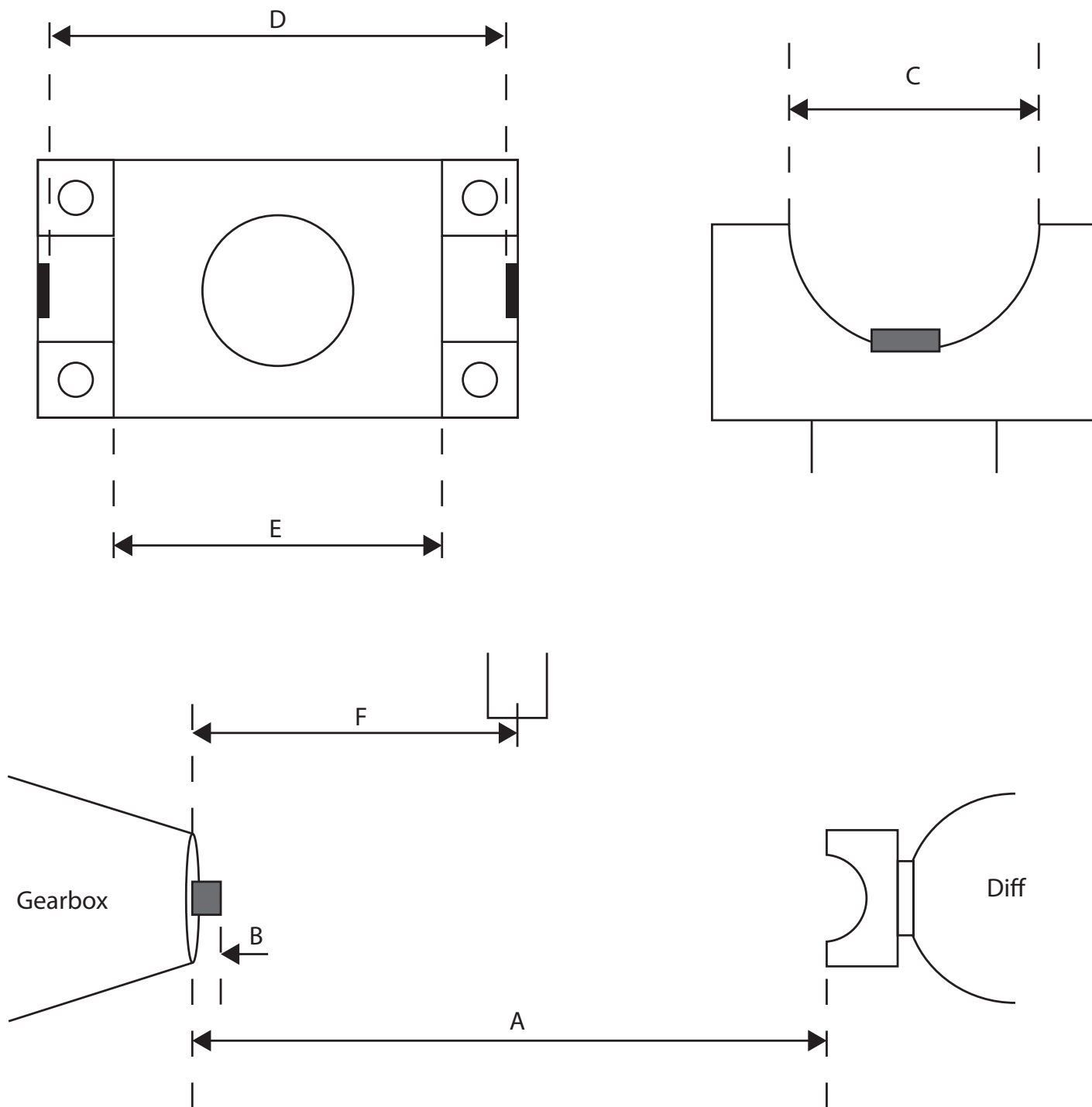


UNIVERSAL DRIVE SHAFT SERVICES QUEENSLAND

Engine Horsepower =
Engine Maximum RPM =

Street Only
Street & Strip
Strip Only

A =
B =
C =
D =
E =
F =



Mason Enterprises (Old) Pty Ltd T/A
 ABN 86 105 252 502 ACN 105 252 702
 Office Address: 446 Newmen Road Geebung QLD 4034
 Postal Address: PO Box 242 Geebung WLD 4034
 Telephone: (07) 3265 3397 Facsimile: (07) 3216 5446

24 Hour Breakdown Service - universaldriveshafts.com.au